

Maryland Historical Trust

Commission on
the Future of
the Pikesville
Armory

1.18.2018



MARYLAND DEPARTMENT OF PLANNING
Maryland Historical Trust



What is the Maryland Historical Trust?

- Part of the Maryland Department of Planning, the Maryland Historical Trust serves as Maryland's State Historic Preservation Office (SHPO) pursuant to the National Historic Preservation Act of 1966
- Programs support the identification, evaluation, protection and enhancement of historical and cultural resources
- Includes the Jefferson Patterson Park & Museum in St. Leonard, Maryland, which houses the Maryland Archaeological Conservation Laboratory



MARYLAND DEPARTMENT OF PLANNING
Maryland Historical Trust



Role of Maryland Historical Trust

- Historic preservation laws require state and federal government agencies to consider the effects of their projects on historic and archeological resources through a consultation process known as "Section 106" review.
- The goal of this review is to help ensure that federal and state projects avoid, reduce or mitigate harm to historic and archeological properties.
- The state action that is triggering MHT involvement and review in this case is the deaccessioning of the armory out of state ownership.

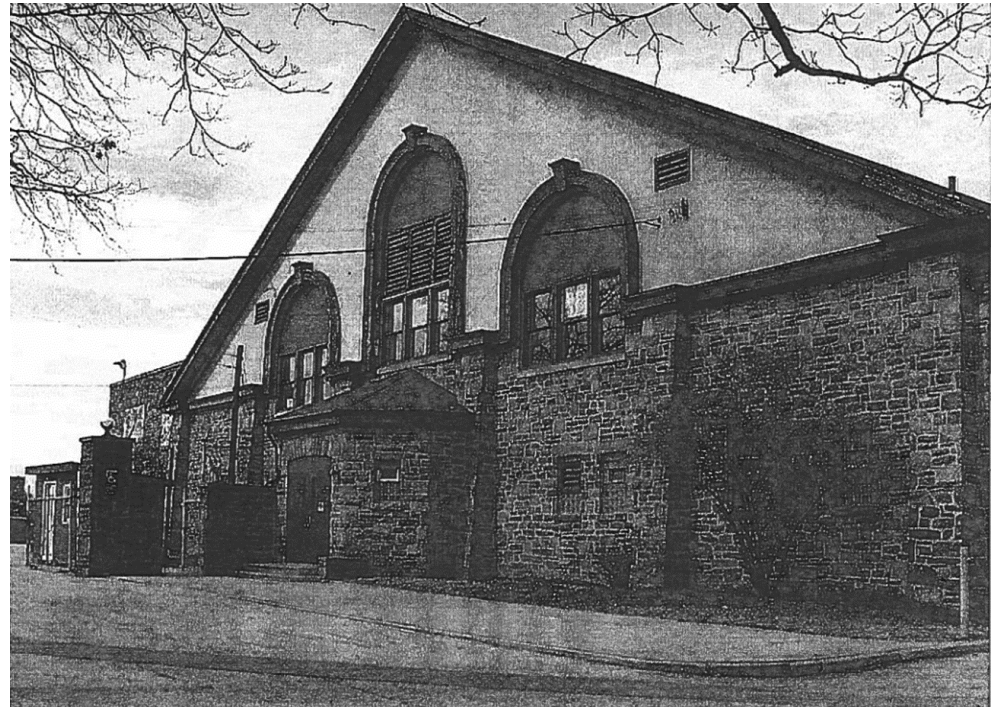


MARYLAND DEPARTMENT OF PLANNING
Maryland Historical Trust



Role of Maryland Historical Trust

- Disposing of the historic property out of state ownership would constitute an “adverse effect” because it would remove the protections afforded by the Maryland Historical Trust Act and the National Historic Preservation Act (NHPA).
- As per these laws, it is the responsibility of the Maryland Military Department to seek ways to avoid or mitigate this “adverse effect.”
- Conveyance of an historic preservation easement on the armory to the Maryland Historical Trust avoids the adverse effect.



MARYLAND DEPARTMENT OF PLANNING
Maryland Historical Trust



What is an Easement?

- A historic preservation easement is a legally binding agreement or contract, recorded in the land records, between the owner of a property and the easement holder that provides for the protection of the property.
- The easement “runs with the land” meaning that present and future owners are bound by the easement.
- Alterations to easement properties must meet the Secretary of the Interior’s *Standards for the Treatment of Historic Properties*.
- Each easement is unique and is tailored to protect what is historically significant about the property under easement



The screenshot shows the Maryland Historical Trust website. At the top, there's a navigation bar with links to Maryland.gov, Phone Directory, State Agencies, and Online Services. Below this is the Maryland Historical Trust logo and a search bar. A secondary navigation bar includes links for HOME, FUNDING, RESEARCH AND SURVEY, PROJECT REVIEW, ARCHEOLOGY, and GET INVOLVED. The main content area features a 'Resources' section with links to General Easement, FAQ's, MHT Easement Properties by County, Maryland State Archives Land Records for Easement Documents, and National Park Service Technical Briefs. To the right, the 'Maryland Historical Trust Easement Program' section explains that historic preservation easements are important tools for protecting historic and cultural value. It states that these agreements ensure that a property's historic and cultural value will be protected in perpetuity. The text further explains that as contractual agreements between a property owner and a qualified organization, preservation easements can safeguard historic homes, farmsteads, archeological sites, historic landscapes and other features. It also mentions that typically, owners of the easement property agree to relinquish partial development rights, to maintain the property, to provide limited public access, and to obtain prior approval for any changes or alterations. In exchange, the easement-holding organization promises to ensure compliance with the terms of the easement to protect the property for future generations. Preservation easements sometimes also carry tax benefits to the property owner. In some cases, conveyance of an easement is a requirement to receive financial support from the State. Below this text are two buttons: 'Existing Easements' and 'How to Convey'. At the bottom of the page, there's a footer with links for Contact Us, Privacy, and Accessibility, and the address: Maryland Historical Trust, 100 Community Place, 3rd Floor.



MARYLAND DEPARTMENT OF PLANNING
Maryland Historical Trust



History and Significance of Armory

The Pikesville Armory was listed on the National Register of Historic Places in 1985 and comprises the total parcel historically associated with the resource.

- Built in 1903, it is Maryland's second-oldest armory.
- Designed by the prestigious Baltimore architectural firm of Wyatt and Nolting who are also known for designing the Baltimore City Courthouse (1900), the Fifth Regiment Armory (1901), and the Veterans Bureau in Washington D.C.
- The Pikesville Armory is primarily significant for its association with the reorganization and expansion of the National Guard system in the 20th century.
- Significant for the survival of the associated open space; unlike other armories, has not been engulfed by urban growth and congestion.

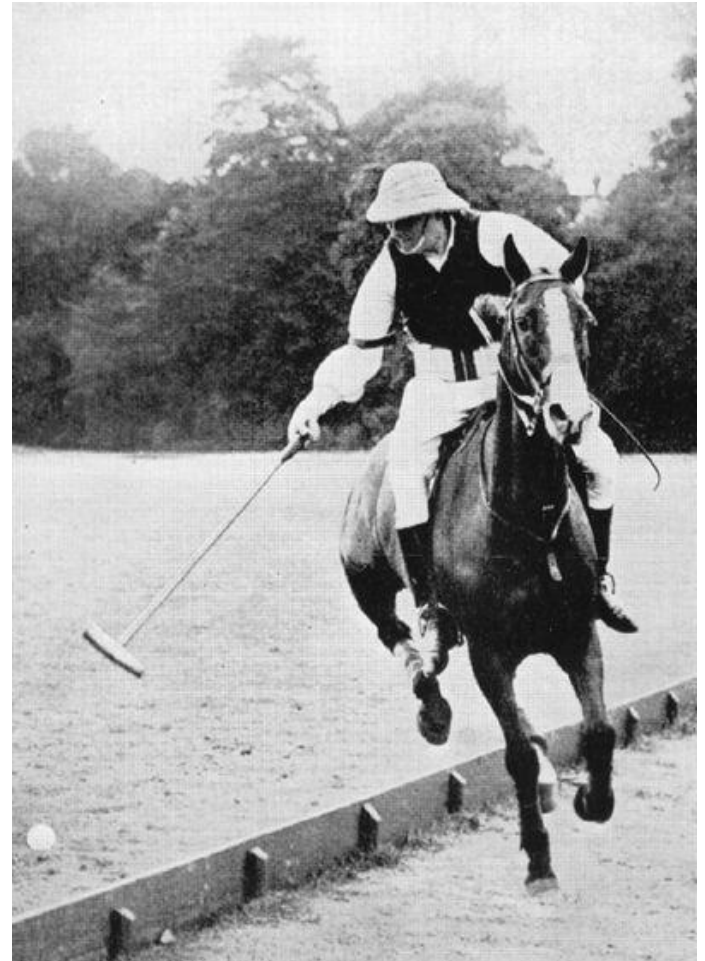


MARYLAND DEPARTMENT OF PLANNING
Maryland Historical Trust



History and Significance of Armory

- Derives additional significance from its role as a social center for the Pikesville community.
- Originally home to a horse artillery regiment with officers from Green Spring Valley, the drill hall was once used for polo matches.
- Served as meeting place for political functions; has hosted Spiro Agnew, Harry Truman, Richard Nixon, Lyndon Johnson, Barry Goldwater, Hubert Humphrey, and John F. Kennedy.
- Armory has hosted community dances, craft fairs, and local rifle clubs who have utilized indoor rifle range.



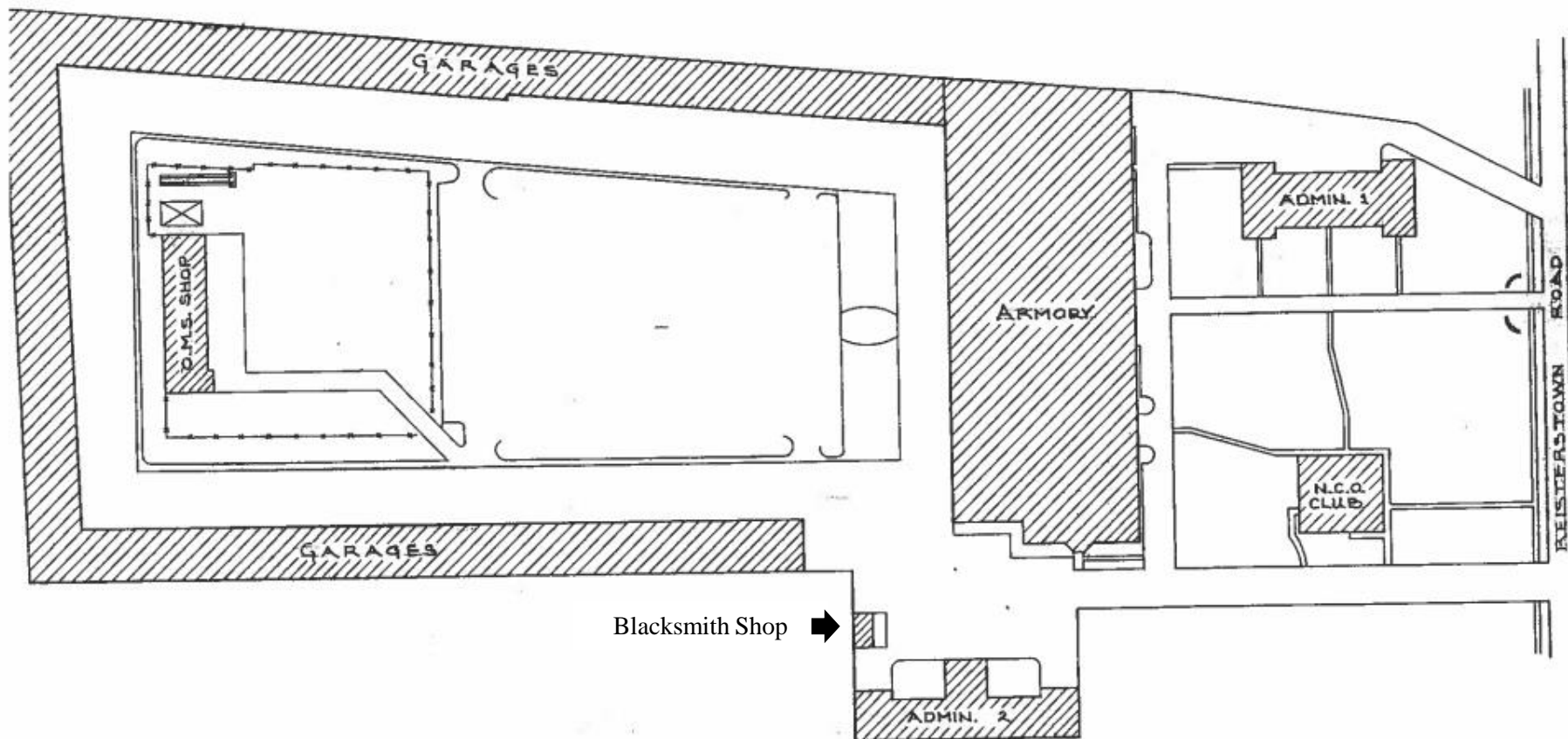
MARYLAND DEPARTMENT OF PLANNING
Maryland Historical Trust





MARYLAND DEPARTMENT OF PLANNING
Maryland Historical Trust





PIKEVILLE SITE PLAN

No Scale



MARYLAND DEPARTMENT OF PLANNING
Maryland Historical Trust



Armory



MARYLAND DEPARTMENT OF PLANNING
Maryland Historical Trust



Armory



MARYLAND DEPARTMENT OF PLANNING
Maryland Historical Trust



Admin. Building 1 (John S. Edwards Jr. Building)



MARYLAND DEPARTMENT OF PLANNING
Maryland Historical Trust

